

# Blouse no. 1



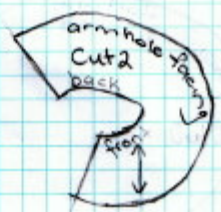
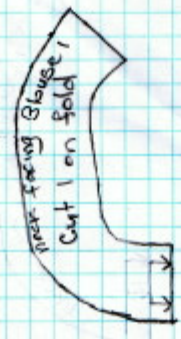
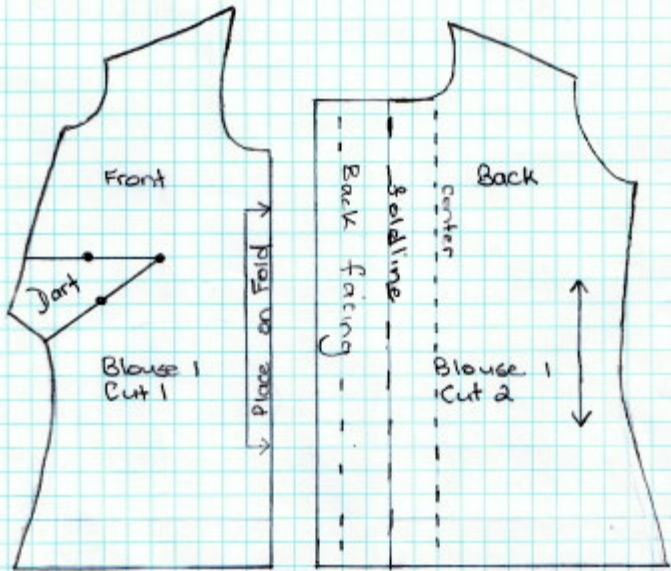
## Materials Needed:

- \*A4 5mm-square graph paper
- \*pencil
- \*ruler
- \*rubber
- \*iron
- \*scissors
- \*sewing machine (or hand-sew)
- \*sewing pins
- \*tape measure {in centimetres (cms)}
- \*polyester cotton thread
- \*polyester cotton type fabric
- \*soft velcro /or 3 buttons & buttonholes/ or 3 fastners for back opening

## Graph:

To print graph - follow instructions on my "Sewing Graphs" page.

Right-click on graph (below) and then left-click "Save Image As" to save it to your computer.



Copyright © 2008 11 1/2 inch fashion doll blouse 1 sewing pattern - Designer: K.F. Williams

**Sewing Instructions:**

Read instructions thoroughly before starting to sew.

Layout and pin pattern to material, tailor tack dots for bust darts at front, and then cut out pattern from material.

(See my "How to Sew" page on how to do tailor tacks.)

**Step 1**

Sew darts at front and press.

### **Step 2**

Stitch shoulder seams 6mm wide, zig-zag seams and press seams open.  
Zig-zag hem edges of front and backs of garment.

### **Step 3**

Zig-zag bottom raw edge of neck facing.

At back center openings: turn in 7.5mm twice (1/2 of 1.5cm twice) at raw edge into wrong side, pin to hold in place and then press.

Pin neck facing around neck edge: starting at front centers (that is: matching front centers first) and matching ends of facing to first

foldline at center backs, stitch seam (6mm wide) and then clip seam at curves.

Press seam, turn neck facing inside and blind-hem stitch facing edge down at center backs and at shoulders.

Turn in center back foldline (at top) into place again, and blind-hem stitch loosely right down center backs.

### **Step 4**

Zig-zag bottom raw edge of armhole facings.

Pin and sew (6mm wide seam) armhole facings to armhole edges, clip at curves of seam and press.

Turn armhole facings to inside (wrong side), pin, press and blind-hem stitch loosely to garment at shoulders.

### **Step 5**

Sew side seams (6mm wide) from facings to hem edge.

Press side seams closed and zig-zag closed.

Just under the armholes - at top of each side seam blind-hem stitch down to face towards the back.

At bottom of each side seam: pin side seam towards back to remind you to face them that way when you are sewing hem.

### **Step 6**

Turn 6mm twice at hem edge and then blind-hem stitch hem.

### **Step 7**

Overlap back opening 1cm and sew buttons and buttonholes (or fastners or velcro), centered within that 1cm overlap.

**Copyright © 2008 11 1/2 inch fashion doll blouse 1 sewing pattern - Designer: K.F.Williams**