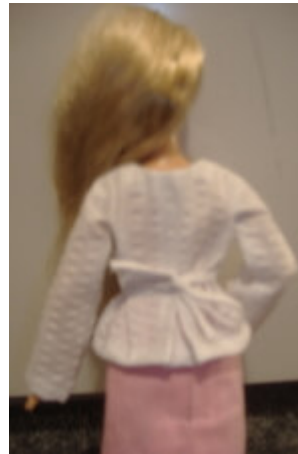


Blouse no.2



Materials Needed:

If drawing graph by hand:

- *A4/5mm-square graph paper
- *pencil
- *ruler
- *rubber

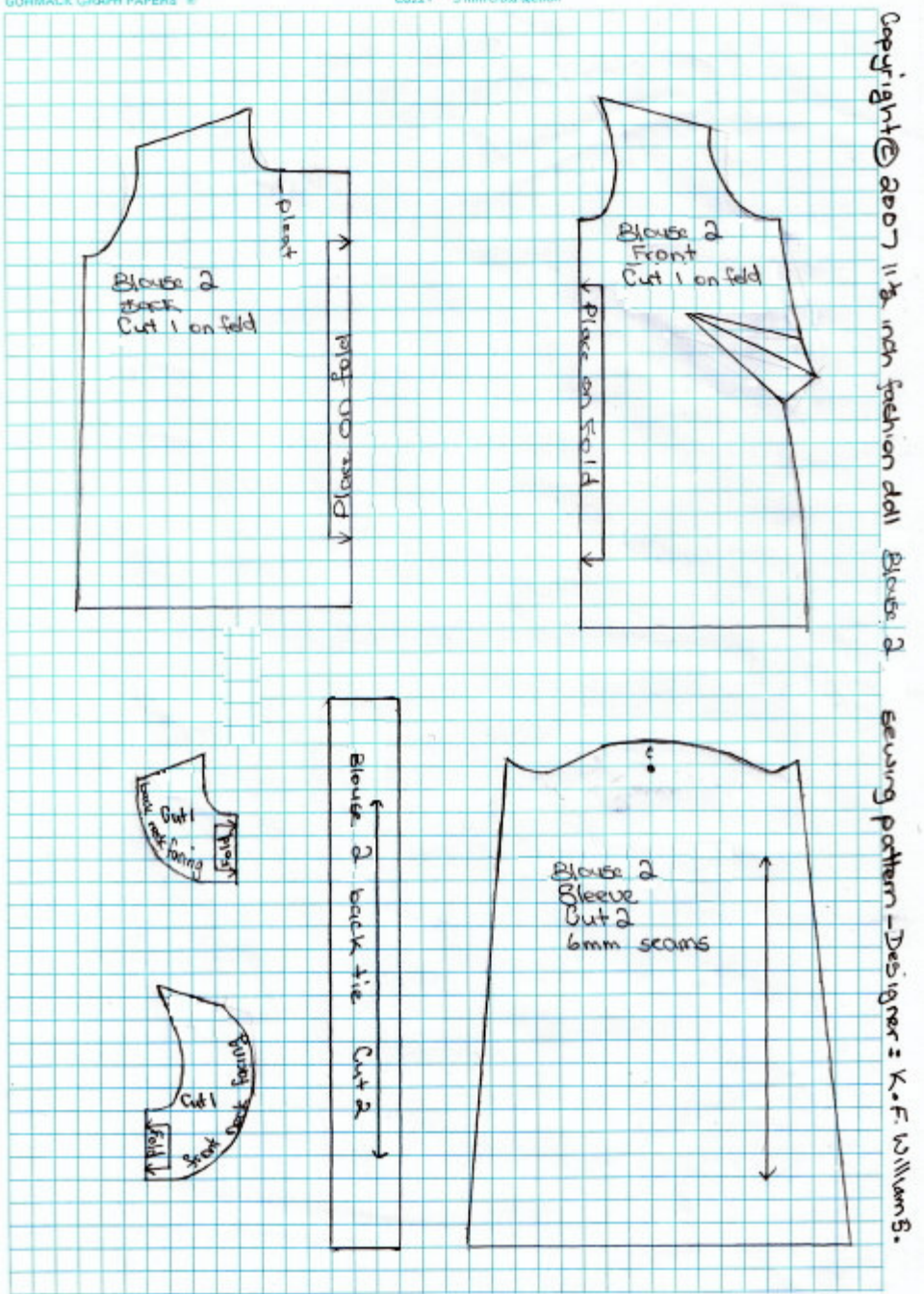
To sew outfit:

- *iron
- *scissors
- *sewing machine (or hand-sew)
- *sewing pins
- *tape measure {in centimetres (cms)}
- *polyester cotton thread
- *polyester cotton type fabric/or any lightweight fabric

Graph:

To print graph - follow instructions on my "Sewing Graphs" page.

Right-click on graph (below) and then left-click "Save Image As" to save it to your computer.



Sewing Instructions:

Read instructions thoroughly before starting to sew.

Make sure to pin seams together in place before sewing, afterwards neaten seams and press.

Step 1

Use tailor tacking to mark the position of the darts.

Sew darts at front.

Step 2

From top of center back neck: sew back pleat down 1cm (1.5cm wide seam).
Line up center of pleat (at center foldline) with pleat seamline, press, and then sew across it at neckline edge to hold it in place (this is called baste-stitch).

Step 3

Sew shoulder seams (6mm wide).

Step 4

Pin and at same time while easing sleeve into armhole; match top-center sleeve to shoulder seamline, and then finally sew in sleeve (6 mm seam).

At sleeve hem end turnover 6mm twice and sew down.

Step 5

Sew back neck facing to front neck facing at shoulders (6mm wide seams).

Sew completed neck facing to neckline; matching shoulder seam lines and centers (6mm wide seam).

At neckine seam edge clip slits at curves.

Turn into inside of garment.

Using blind hem stitch; stitch edge of facing down at shoulders in place.

Step 6

To make up back tie: On each tie piece; turn in 2mm each side and fold into center and sew together about 2mm from edge.

With right (good) side facing baste-stitch ties at sides right underneath each bustline of front. Make sure the length of the ties are lying towards centers.

Sew side seams (6mm) - from bottom (at hemline end) to sleeve ends, making sure to match underarm seamlines.

Step 7

Turn up 6mm twice at bottom (at hemline) and sew 3mm from edge.

Copyright © 2007 11 1/2 inch fashion doll blouse 2 sewing pattern - Designer: K.F.Williams