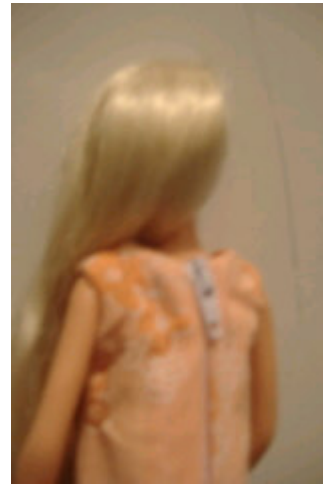


Dress 1



Materials Needed:

If drawing graph by hand:

*A4/5mm-square graph paper

*pencil

*ruler

*rubber

To sew outfit:

*iron

*scissors

*sewing machine (or hand-sew)

*sewing pins

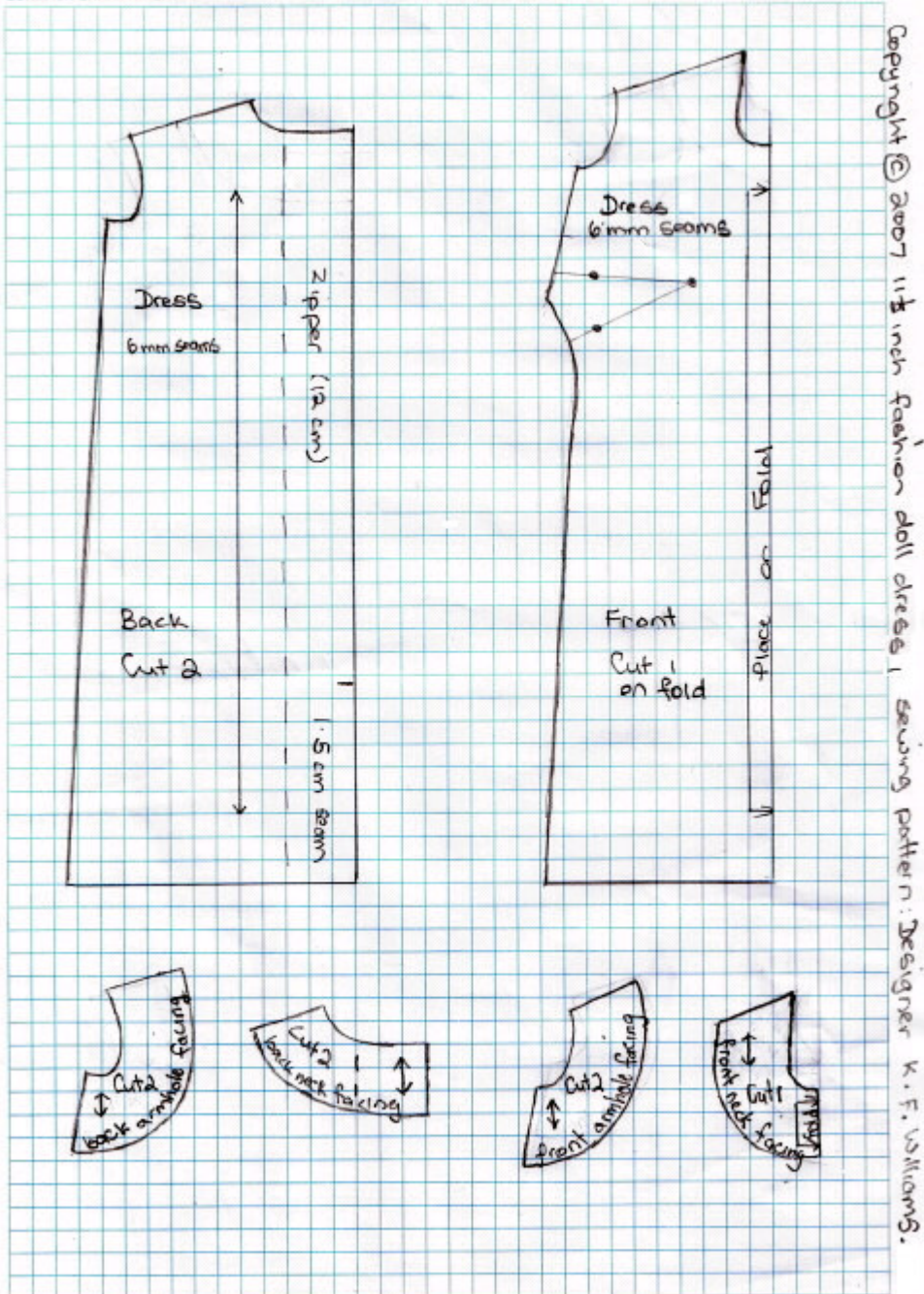
*tape measure {in centimetres (cms)}

*polyester cotton thread

*polyester cotton type fabric

*11 cm dress zipper (or zipper-length cut to size - 11.5cm)

Graph:



Sewing Instructions:

Read instructions thoroughly before starting to sew.

Make sure to pin seams together in place before sewing, afterwards neaten seams and press.

Step 1

Use tailor tacking to mark the position of the darts.

Sew darts at front.

Step 2

Starting 11cm down from top edge - sew back center seam (1.5cm wide) thus leaving a top opening to sew zipper into later.

Step 3

Sew zipper into back center opening.
{If you could not find a dress zipper 11cm long follow instructions below:



Cut zipper to 11.5cm long and oversew teeth together - over and over until secure; as shown in the pic above in brown cotton and then blanket-stitch by hand the bottom raw edge of zipper.

Step 4

Sew shoulder seams (6mm wide).

Step 5

Sew each front armhole facing piece to its corresponding back armhole facing piece at the shoulders of facing pieces (6mm wide seams).

Sew completed armhole facings to armholes of the garment (seams 6mm wide), turn in armhole facings to inside of garment.

Step 6

Sew (6mm seams) back neck facing pieces to front neck facing piece at shoulders of facing pieces.

Sew (6mm seam) completed neck facing to neckline; matching shoulder seam lines and centers.

At neckline seam edge clip slits at curves.

Turn facing into inside of garment.

Turn in 1.5cm at facing sides and blind hem stitch to each side of back (over each side of zipper) inside of garment.

Using blind hem stitch; stitch rest of facing down at shoulders and then at center to hold and secure facing in place.

Step 7

Sew side seams (6mm) - from bottom (at hemline end) to armhole facing ends, making sure to match underarm seamlines.

Step 8

Turn up 6mm twice at bottom (at hemline) and sew down.

**Copyright © 2007 11 1/2 inch fashion doll dress 1 sewing pattern - Designer:
K.F.Williams.**