

Dress 2





Materials Needed:

If drawing graph by hand:

*A4/5mm-square graph paper

*pencil

*ruler

*rubber

To sew outfit:

*iron

*scissors

*sewing machine (or hand-sew)

*sewing pins

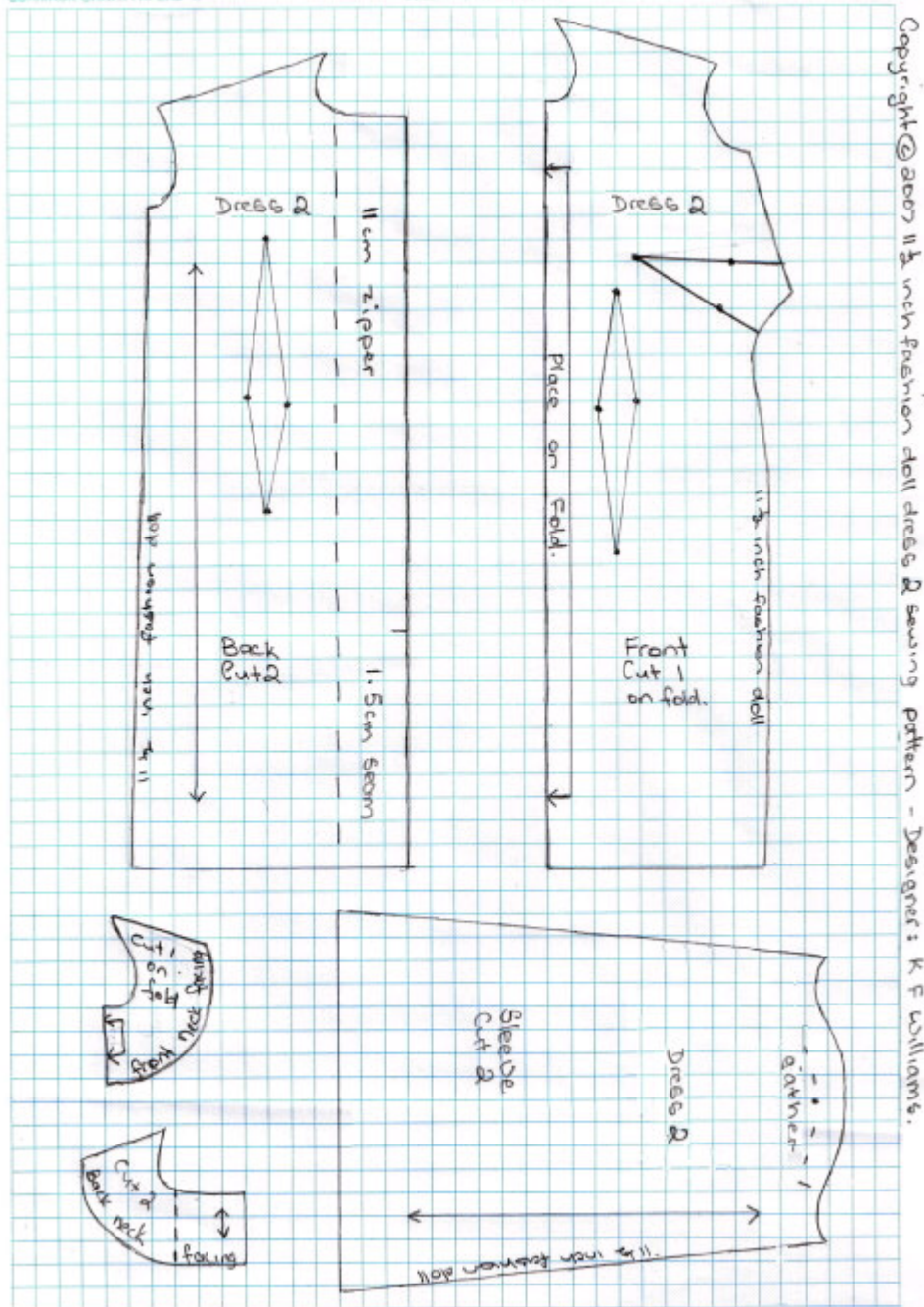
*tape measure {in centimetres (cms)}

*polyester cotton thread

*polyester cotton type fabric

*11 cm dress zipper (or zipper-length cut to size - 11.5cm)

Graph:



Sewing Instructions:

Read instructions thoroughly before starting to sew.

Make sure to pin seams together in place before sewing, afterwards neaten seams and press open:

Step 1

Use tailor tacking to mark the position of the darts.

Sew darts at front and back.

Step 2

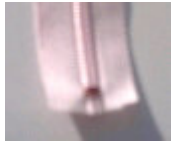
Starting 11cm down from top edge - sew back center seam (1.5cm wide) thus leaving a top opening to sew zipper into later.

Zigzag both sides of back center raw edges from opening to end of seam.

Step 3

Sew zipper into back center opening.

{If you could not find a dress zipper 11cm long follow instructions below:



Cut zipper to 11.5cm long and oversew teeth together - over and over until secure; as shown in the pic above in brown cotton and then blanket-stitch by hand the bottom raw edge of zipper.

Step 4

Sew shoulder seams (6mm wide).

Step 5

Gather at top of sleeves where markings are shown on the sleeve pattern.

Pin sleeve to armhole; matching center sleeve to center armhole and pin into place, pin rest of sleeve easing in gathering to match armhole width and then finally sew in sleeve (6 mm seam).

Zig-zag the edge of the sleeve seam.

At sleeve hem end turnover 6mm twice and sew down.

Step 6

Sew (6mm seams) back neck facing pieces to front neck facing piece at shoulders of facing pieces.

Sew (6mm seam) completed neck facing to neckline; matching shoulder seam lines and centers.

Zigzag along bottom edge of neck facing.

At neckine seam edge clip slits at curves.

Turn facing into inside of garment.

Turn in 1.5cm at facing sides and blind hem stitch to each side of back (over each side of zipper) inside of garment.

Using blind hem stitch; stitch rest of facing down at shoulders and then at center to hold and secure facing in place.

Step 7

Sew side seams (6mm) - from bottom (at hemline end) to sleeve ends, making sure to match underarm seamlines.

Zig-zag edges of side seams.

Step 8

Turn up 6mm twice at bottom (at hemline) and sew down.

**Copyright © 2007 11 1/2 inch fashion doll dress 2 sewing pattern - Designer:
K.F.Williams**