

# Jacket 1

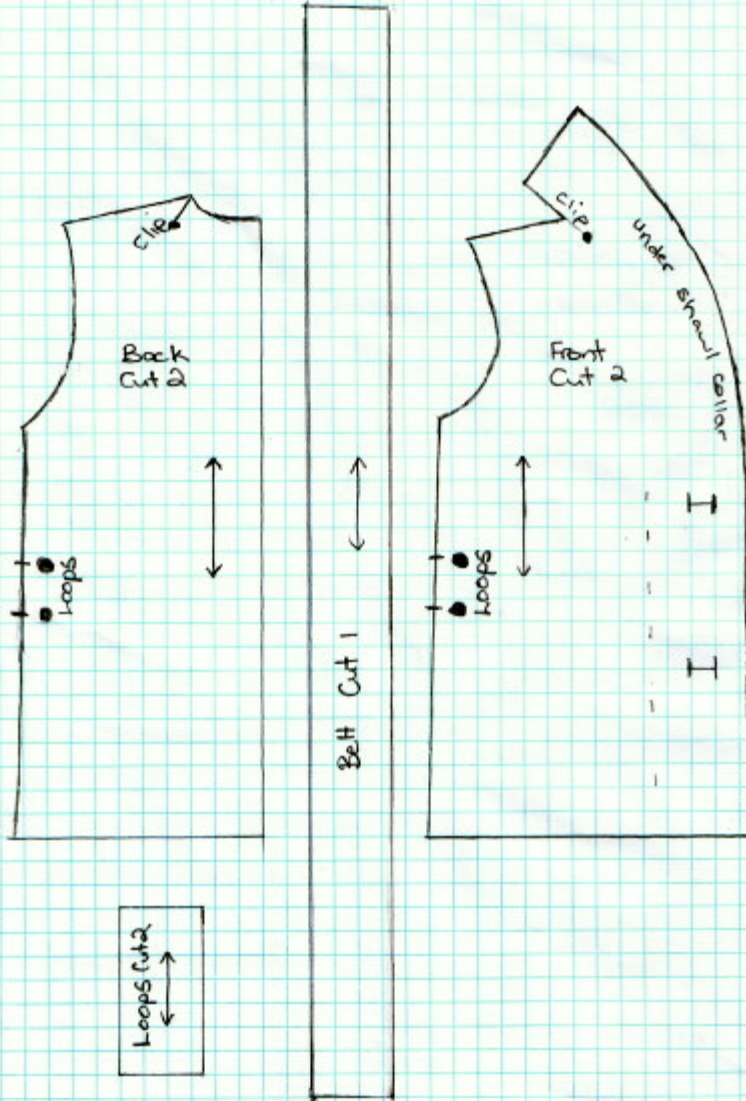


## Materials Needed:

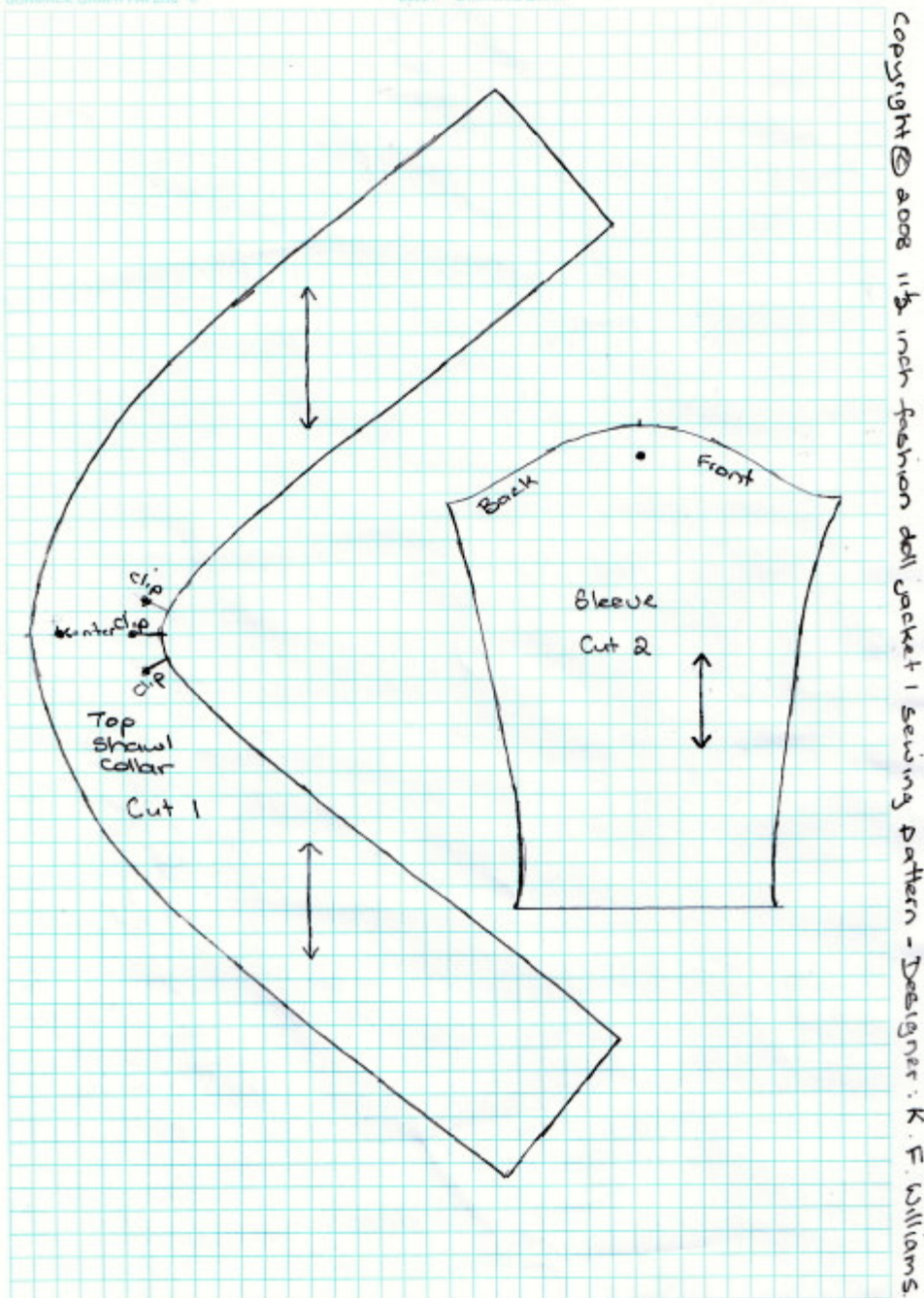
- \*A4 5mm-square graph paper
- \*pencil
- \*ruler
- \*rubber
- \*iron
- \*scissors
- \*sewing machine (or hand-sew)
- \*sewing pins
- \*tape measure {in centimetres (cms)}
- \*polyester cotton thread matching material and different colored thread for tailor tacks
- \*lightweight/soft type of fabric

## Making up pattern:

Print the 2 graphs and copy the printed graphs by hand-drawing on to A4 5mm-square graph paper - This will give the actual sizes for the pattern peices.



Copyright © 2008 11/2 inch fashion doll jacket 1 sewing pattern - Designer: K. F. Williams.



## Sewing Instructions:

Read instructions thoroughly before starting to sew.

Layout and pin pattern pieces to material, tailor tack dots at fronts and backs, tailor tack 3 dots at top shawl collar, tailor tack dot at top of sleeves, and then cut out pattern pieces from material. (See my "How to Sew" page on how to do tailor tacks.)

### Step 1

Stitch the back center seam (6mm wide) and press open. Then zig-zag each side of back seam.

Stitch the back center seam of the attached under collar (on the fronts) and press open.  
Clip to tailor tacks (dots) at neck corners.

## **Step 2**

Pin fronts to backs along shoulder seams and sew shoulder seams (6mm wide) to clipped corners.  
Pin back neck edges together, matching center back seams.  
Stitch back neck, starting by overlapping a little at shoulder seam, pivoting needle at neck edge dots, ending by overlapping a little at other shoulder seam.  
Press shoulder seams towards back, then press the back neck seam on to the under collar.

## **Step 3**

Each sleeve:

\*DO NOT\* clip to tailor tack (dot) at top of sleeve, this is just to mark center of top sleeve.

Pin center (marked with tailor tack) of top of sleeve to center-top of armhole (shoulder seamline), then back of top of sleeve to back of armhole and front of top of sleeve to front armhole, and with sleeve facing down (on sewing machine table surface) sew seam 6mm wide and finally zig-zag raw edges of seam together.

Turn over 6mm twice at sleeve ends and sew. Press.

## **Step 4**

Making Loops for Belt:

Fold across loops to find center, press foldline, turn in each side meeting center and fold again, press and sew 2mm from edge. Leave long end-edges raw.

Pin loops into place at each side of back (where tailor tacks indicate where to pin them) and stitch into place 6mm from side edges.

Stitch front pieces to back pieces along side seams to sleeve ends.

Zig-zag raw edges of seam together and press.

## **Step 5**

Pin outer top collar and outer under collar together matching centers first (NB: top collar's center is marked with a tailor tack - do not clip), then matching each end, and finally rest of outer edge (but not at hem edge), and sew 6mm wide seam.

Clip at curves of outer collar seam and then press seam towards top collar raw edge.

NOW DO A CHECK of Seam: Just turn top collar into inside of garment to check that at back neck under collar: when it is standing up - it sits straight and even at each side of back seam, if not: re-sew seam over at each side of center to correct. This is well worth the effort for a good-look collar.

Press under 6mm along raw edge of top collar, clip to tailor tacks (dots) and then top-stitch turned under edge.

## **Step 6**

With right sides together pin each end of the bottom edge of the collar to corresponding hem edge of garment, sew 12mm seam, clip at corners of seam and turn in to right (good) side.

Using closed scissors (very carefully) push sleeves into the right (good) side.

Turn under and press 6mm twice for hem and using hem-stitch hand sew hem.

## **Step 7**

Top-stitch (2mm wide) from front hem edge, around collar edge and then down other side of front hem edge.

Making Belt:

Across belt fold belt to find center, press foldline, turn in each side meeting center foldline and fold over, press and sew together as close to folded edges as possible. Leave long end-edges raw. I think doing blind hem stitch along folded edges would look much nicer and easier to do, just more timely.

Insert belt into loops at sides.

**Copyright © 2008 11 1/2 inch fashion doll jacket 1 sewing pattern - Designer: K.F.Williams**