

Kiwi Fashion Doll Knitting Patterns

in alphabetical order



These free knitting patterns you will be able to make up for any Barbie-type doll. They are simple and easy to make. You will find that you can alter them very easily. I am sure they will make lovely gifts for any little girl and you will find them a great way for you to help raise funds for your favourite charities.

*Have fun! :).
Enjoy... regards Kathleen.*

Boat neck jersey



8 ply yarn

New Zealand/France=3.25 mm (USA=3, Canada=10) knitting needles

New Zealand/France=4.00 mm (USA=5, Canada=8) knitting needles

6sts to 7 rows = 1 square inch (2.5 square cms)

Back

Using 3.25 mm needles cast on 15 stitches. 1st row: Knit 1, purl, repeat to last stitch, knit 1. 2nd row: Purl 1, knit 1, repeat to last stitch, purl 1. Repeat 1st and 2nd rows once more. Change to 4.00 mm needles and work following rows in stocking stitch, (stockinette stitch): Next 8 rows: Work straight. Last 4 rows: Change back to 3.25 mm needles and work in rib as follows; 1st row: Knit 1, purl 1, repeat to last stitch, knit 1. 2nd row: Purl 1, knit 1, repeat to last stitch, purl 1. Repeat 1st and 2nd rows once more. Cast off (bind off) loosely.

Front

Same as for back.

Sleeves

Using 3.25 mm needles cast on 10 stitches. 1st 4 rows: Work in rib, knit 1, purl 1. Change to 4.00 mm needles and work following rows in stocking stitch (stockinette stitch). 5th row: Increase 1 stitch each end of row. 6th row: Work straight. 7th row: Increase 1 stitch each end of row. Next 3 rows: Work straight. Cast off (bind off) loosely. {NB.:mark very top centre of sleeve with different coloured yarn: (= yarn marker).

Making Up

Sew up shoulder seams, leaving enough for neck line. Match top sleeve centre (using yarn marker) in line with shoulder seam line, to side edge with a pin. Pin rest of top sleeve to side edge and sew seam up. Once you have sewn sleeves to side edges, sew jersey side seams.

Copyright © 2003 11 1/2 inch fashion doll boat neck jersey Designer: K. F. Williams.

Chain Neck Evening Dress (short-length version)



Double Knitting (DK) 8 ply
New Zealand/France=3.25 mm (USA=3, Canada=10) knitting needles
New Zealand/France=4.00 mm (USA=5, Canada=8) knitting needles
6 sts to 7 rows = 1 square inch (2.5 square cms)

Back and Front Knitted All in one

With 3.25 mm needles cast on 24 sts and work 2 rows in k1, p1 rib.

Change to 4.00 mm needles and work following rows in stst starting with a knit row as follows: Row 3: inc into 1st, 11th, 12th and 23rd sts by knitting into back of these 4 sts. (28 sts) Next 17 rows: work straight ending with last row in purl. 21st row: k5, *k2 tog*, rep from * to * once more, k10, *k2 tog*, rep from * to * once more, k last 5. (24 sts rem) 22nd row: purl row. 23rd row: k4, *k2 tog*, rep from * to * once more, k8, *k2 tog*, rep from * to * once more, k last 4. (20 sts rem) 24th row: purl row.

Change to 3.25 mm needles and work following rows in k1, p1 rib pattern. Next 2 rows: work straight. 27th row: work 6 sts, cast off 8 sts loosely ribwise until 6 sts rem and work these sts to end. 28th row: work 6 sts in k1, p1 rib, turn work and cast on 16 sts knitwise (not in rib), start by knitting into back of 6th stitch, turn work again and continue on with last 6 sts in k1, p1 rib.

Change to 4.00 mm needles and work in stst starting with a knit row as follows: 29th row: work along row - knitting into back of all sts. 30th row: purl row. Next 4 rows: work straight.

Change to 3.25 mm needles and work 2 rows in k1, p1 rib. Cast off in k1, p1 rib (ribwise).

Making Up

1. Oversew back seam and turn in garment to right (good) side.
2. Finger knit a tightish chain 28 cm long (11 inches).
3. Tie chain (do not double knot) through and around the center of bust top (as shown in pic) and then tie in a bow at back of neck.

Copyright © 2010 11 1/2 inch fashion doll chain neck evening dress (short-length version) - Designer: K. F. Williams

**Chain Neck Evening Dress
(long-length version)**



Double Knitting (DK) 8 ply
New Zealand/France=3.25 mm (USA=3, Canada=10) knitting needles
New Zealand/France=4.00 mm (USA=5, Canada=8) knitting needles
6 sts to 7 rows = 1 square inch (2.5 square cms)

Back and Front Knitted All in one

With 3.25 mm needles cast on 48 sts and work 2 rows in k, p1 rib.

Change to 4.00 mm needles and work following rows in stst:- Next 26 rows: work straight.
29th row: *k2 tog*, rep from *to* to end. (24 sts rem) 30th row: purl row. 31st row: inc into 1st, 11th, 12th, and 23rd sts by knitting into the front and then into the back of these 4sts. (28sts)
Next 17 rows: work straight ending with a purl row. 49th row: K5, *k2 tog*, rep from *to* once more, k10, *k2 tog*, rep from * to * once more, k last 5. (24 sts rem) 50th row: purl row. 51st row: k4, *k2 tog, rep from * to * once more, k8, *k2 tog*, rep from * to * once more, k last 4. (20 sts rem) 52nd row: purl row.

Change to 3.25 mm needles and work following rows in k1, p1 rib pattern. Next 2 rows: work straight. 55th row: work 6 sts, cast off 8 sts loosely rib-wise until 6 sts rem, work to end. (12 sts rem) 56th row: work 6 sts in k1, p1 rib, turn work and cast on 16 sts knit-wise (not in rib) starting by knitting into back of 6th st, next turn work again and continue on with last 6 sts in k1, p1 rib. (28 sts)

Change to 4.00 mm needles and work in stst starting with a knit row as follows: 57th row: work row by knitting into back of each stitch. 58th row: purl row. Next 4 rows: work straight.

Change to 3.25 mm needles and work 2 rows in k1, p1 rib. Cast off in k1, p1 rib.

Making Up

1. Oversew back seam and turn garment into right (good) side.
2. Finger knit a tightish chain 28 cm long (11 inches).

3. Tie chain (do not double knot) around and through the center of bust top (as shown in pic) and then tie in a bow at back of neck.

Copyright © 2010 11 1/2 inch fashion doll chain neck evening dress (long-length version) - Designer: K. F. Williams

Check V Neck Jersey



8 ply yarn

New Zealand/France=3.25 mm (USA=3, Canada=10) knitting needles

New Zealand/France=4.00 mm (USA=5, Canada=8) knitting needles

6sts to 7 rows = 1 square inch (2.5 square cms)

Back

** With NZ size 3.25 mm needles cast on 15 sts. Work first 4 rows in rib as follows: 1st row: *k1, p1; rep from * to last st, k1. 2nd row: *p1, k1; rep from * to last st, p1. Repeat 1st and 2nd rows once more. Change to NZ size 4.00 mm needles and work following rows for check patt as follows: 5th row: inc into first st, then k2, p3, k3, p3, k2, inc into last st. (17 sts) 6th row: k1, *p3, k3; rep from * to last 4 sts, p3, k1. 7th row: p1, *k3, p3; rep from * to last 4 sts, k3, p1. Next 2 rows: work as for 6th row. 10th row: work as for 7th row. 11th row: work as for 6th row. Next 2 rows: work as for 7th row. 14th row: work as for 6th row. ** 15th row: work as for 7th row. Next 2 rows: work as for 6th row. 18th row: work as for 7th row. 19th row: work as for 6th row. Next 2 rows: work as for 7th row. 22nd row: work as for 6th row. Shaping Armholes: 23rd row: cast off first 2 sts keeping check patt, then k1, p3, k3, p3, k3, p1. (15 sts rem) 24th row: cast off first 2 sts keeping check patt, then p1, k3, p3, k3, p2. (13 sts rem) 25th row: p2, k3, p3, k3, p2. 26th row: k2, p3, k3, p3, k2. Rep 25th and 26th rows once more. Shaping Shoulders: 29th row: cast off first 3 sts keeping check patt, then p1, k3, p3, k2. (10 sts rem) 30th row: cast off first 3 sts keeping check patt, then k1, p3, k2. (7 sts rem) Back Neckband: Change to NZ size 3.25 mm needles and knit 1 row. Work last 2 rows in rib as follows: 1st row: *k1, p1; rep from * to last st, k1. 2nd row: *p1, k1; rep from * to last st, p1. Cast off loosely in rib.

Front

Same as for back from ** to **. Dividing for neck and shaping armholes: Left side: 15th row: p1, k3, p3, k1, leave rem 9 sts on holder and turn work. 16th row: cast off first st keeping check patt, k2, p3, k1. (7sts rem) 17th row: k1, p3, k3. 18th row: cast off first st keeping check patt, p1, k3, p1. (6 sts rem) 19th row: k1, p3, k2. 20th row: cast off first st keeping check patt, k3, p1. (5 sts rem) 21st row: p1, k3, p1. 22nd row: k1, p3, k1. 23rd row: cast off first 2 sts

keeping check patt, then k1, p1. (3 sts rem) 24th row: p2, k1. 25th row: p1, k2. 26th row: p2, k1. 27th row: p1, k2. 28th row: p2, k1. Cast off loosely keeping check patt. Right side: With wsf rejoin yarn to sts on holder, k1, p3, k3, p1, leave last st still rem on holder - this is front centre st. 16th row: cast off first st keeping check patt, then p2, k3, p1. (7 sts rem) 17th row: p1, k3, p3. 18th row: cast off first st keeping check patt, then k1, p3, k1. (6 sts rem) 19th row: p1, k3, p2. 20th row: cast off first st keeping check patt, then p3, k1. (5 sts rem) 21st row: k1, p3, k1. 22nd row: p1, k3, p1. 23rd row: cast off first 2 sts keeping check patt, then p1, k1. (3 sts rem) 24th row: p1, k2. 25th row: k2, p1. 26th row: k1, p2. 27th row: k2, p1. 28th row: k1, p2. Cast off loosely in check patt. Front Neckband: With wsf (wrong side facing) using NZ size 3.25 mm needles pick up 8 sts down front neck, between 8th st and front centre st (on holder) pick up loop to make 9th st, pick up front centre st from holder (mark front centre st with different coloured yarn), then pick up loop after front centre st to make 11th st, pick up 8 sts up front neck. (19 sts) Rejoin yarn. 1st row: inc into each of first 9 sts, k centre st, inc into each of last 9 sts. (37 sts) 2nd row: work *k1, p1 rep from * to last 2 sts before centre st, p2 tog, p centre st, p2 tog, then work *p1, k1 rep from * to end. (35 sts) 3rd row: rib (begin p1) to with in 2 sts of centre st ending with p1, k next 2 sts tog tbl, k centre st, k next 2 sts tog, rib (begin p1) to end. (33 sts) Cast off as follows: cast off ribwise (beg with k1) to last 2 sts before centre st, p2 tog; cast off next st purlwise, p centre st; cast off next st purlwise, p2 tog, cast off next st purlwise, cast off rem sts ribwise (beg with p1) to end. Pull out different coloured yarn marker from centre st.

Sleeves

With NZ size 3.25 mm needles cast on 8 sts and work 4 rows in k1, p1 rib. Change to NZ size 4.00 mm needles and work following rows in check patt as follows: 5th row: inc into first st, then k2, p3, k1, inc into last st. Next 3 rows: p2, k3, p3, k2. 9th row: k2, p3, k3, p2. Next 3 rows: same as for 9th row. 13th row: p2, k3, p3, k2. Next 3 rows: same as for 13th row. 17th row: k2, p3, k3, p2. 18th row: same as for 17th row. 19th row: inc into first st, k next st, p3, k3, p1, inc into last st. (12 sts) Mark each end of 19th row with different coloured yarn to denote end of sleeve seam. 20th row: *k3, p3; rep from* to end. Cast off loosely keeping in check patt.

Making up

Oversew neckband and shoulder seams. Oversew cast-off edge sleeve to straight row-ends of armholes, setting row-ends above different coloured yarn markers on sleeves to sts cast-off at underarms. Join side and sleeve seams. Pull out different coloured yarn markers and tidy loose ends.

Copyright © 2005 11 1/2 inch fashion doll check v neck jersey - Designer: K. F. Williams.

Dolman Dress



8 ply yarn

New Zealand/France=3.25 mm (USA=3, Canada=10) knitting needles

New Zealand/France=4.00 mm (USA=5, Canada=8) knitting needles

6sts to 7 rows = 1 square inch (2.5 square cms)

Back

Using 3.25 mm needles cast on 13 sts. 1st row: K1, p1, repeat to last st, k1. 2nd row: p1, k1, repeat to last st, p1. Repeat 1st and 2nd rows once more. Change to 4.00 mm needles and work following rows in stst: 5th row: Inc 1 st each end. (15 sts) Next 23 rows: work straight. Shape Neck And Sleeves: 29th row: inc 4 sts each end. (23 sts) 30th row: same as for 29th row. (31 sts) 31st row: inc 1 st each end. (33 sts) Next 7 rows: work straight. Cast off 12 sts at beg row, p9 sts, cast off last 12 sts. Slip final 9 sts on holder.

Front

Work as for Back up to end of 28th row. Shape Neck And Sleeves: Work 29th to 31st row and turn. *35th row: work straight. Next 2 rows: Cast off 1 st at neck edge. (12 sts) 38th row: work straight. **Cast off remaining 12 sts. With wrong side facing, slip next 5 sts on holder. Rejoin yarn to other remaining 14 sts and purl 1 row. Complete as for first half; from * to **. Neckband: Join left upper sleeve seam. With right side facing, using 3.25 mm needles, knit across stitches of back, knit up 4 stitches evenly down left front neck, knit across center stitches, finally knit up 4 stitches evenly up right front neck. (22 sts) Beginning 2nd row, work 3 rows in rib, (k1, p1). Cast off in rib. Sleevebands: At sleeve end, and right side facing, using 3.25 mm needles, knit 8 stitches across. Beginning 2nd row, work 3 rows rib, (k1, p1).

Making up

Join side seams, from bottom to sleeve bands.

Copyright © 2006 11 1/2 inch fashion doll dolman dress - Designer: K.F.Williams

Dolman jersey



8 ply yarn

New Zealand/France=3.25 mm (USA=3, Canada=10) knitting needles

New Zealand/France=4.00 mm (USA=5, Canada=8) knitting needles

6sts to 7 rows = 1 square inch (2.5 square cms)

Back

Using 3.25 mm knitting needles cast on 15 stitches. 1st row: Knit 1, purl 1, repeat to last stitch, knit 1. 2nd row: Purl 1, knit 1, repeat to last stitch, purl 1. Repeat 1st and 2nd rows once more. Change to 4 mm knitting needles and work following rows in stocking stitch, (stockinette stitch): Next 2 rows: Work straight, (6 rows). Shaping neck and sleeves: Next 6 rows: Increase 4 stitches at beginning of row. (NB - remember when increasing, to knit/purl into back of each increased stitch.) 13th row: Increase 1 stitch each end of row, (41 sts). Next 5 rows: Work straight. (18 rows) Cast off (bind off) 16 stitches at beginning of row, knit next 9 stitches and cast off (bind off) last 16 stitches at end of row. Slip final 9 stitches on holder.

Front

Work as for Back from 1st row and finishing at end of 6th row. Shaping neck and sleeves:
Work as for Back from 7th row to end of 13th row, (41 sts). 14th row: Purl 18 stitches at beginning of row, place remaining 23 sts on holder and turn work. *15th row: Work straight. Next 2 rows: Cast off (bind off) 1 stitch at neck edge. 18th row: Work straight. Cast off (bind off) remaining 16 stitches.** With wsf (wrong side facing), slip next 5 stitches from holder (these are centre front neck sts) on to yet another holder. With wsf (wrong side facing), rejoin yarn to the 18 stitches on previous holder and purl 1 row. Complete as for 1st half: from * to **

Neckband

Sew upper right sleeve seam. With wsf (wrong side facing), using 3.25 mm needles pick up 9 stitches of back (from holder), 4 stitches evenly down right front, 5 stitches of centre front (from holder) and 4 stitches evenly up left front, (22 sts). Join yarn and work 4 rows in k1, p1 rib. Cast off (bind off) loosely in k1, p1 rib. Sew left side of neckband and left upper sleeve seam.

Sleeve Bands

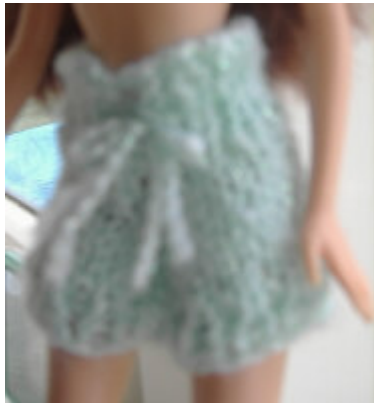
At sleeve end, wsf (wrong side facing), pick up 8 stitches across using 3.25 mm needles. Join yarn and work 4 rows in k1, p1 rib. Cast off (bind off) loosely in k1, p1 rib.

Making Up

Sew side seams, from waistband to sleeve band. Tidy up loose yarn ends inside garment.

Copyright © 2003 11 1/2 inch fashion doll dolman jersey - Designer: K .F. Williams

Drawstring shorts



8 ply yarn

New Zealand/France=3.25 mm (USA=3, Canada=10) knitting needles

New Zealand/France=4.00 mm (USA=5, Canada=8) knitting needles

6sts to 7 rows = 1 square inch (2.5 square cms)

Right leg and crotch

Shaping Leg: Cast on 19 stitches with 4mm needles and work following rows in stocking stitch... First 8 rows: Work straight Shaping Crotch: 9th row: Cast off 2 stitches at beginning of row. (17 sts) 10th row: Cast off 3 stitches at beginning of row. (14 sts) Next 2 rows: Work straight. 13th row: Change to 3.25 mm needles working in rib, (k1,p1). Next 5 rows: Continue straight in rib. Cast off in rib.

Left leg and crotch

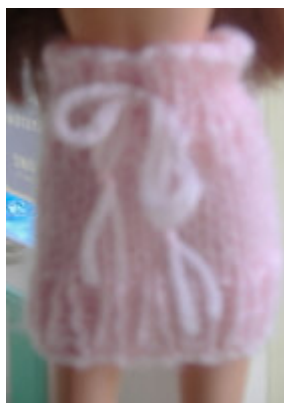
Shaping leg: Cast on 19 stitches with 4 mm needles and work following rows in stocking stitch... First 9 rows: work straight. Shaping Crotch: 10th row: Cast off 2 stitches at beginning of row. (17 sts) 11th row: Cast off 3 stitches at beginning of row. (14 sts) Next row: Work straight. 13th row: Change to 3.25 mm needles working in rib, (k1,p1). Next 5 rows: Continue straight in rib. Cast off in rib.

Making up

1. Pin up right leg seam by easing back of leg to front of leg. Sew up right leg seam. 2. Pin up left leg seam by easing back of leg to front of leg. Sew up left leg seam. 3. Turn the right leg (and crotch) in the right way, (so good side is facing) and keeping the left leg (and crotch) with wrong side facing. 4. Now place and fit the right leg into the left leg. Pin up crotch seam by matching both right and left crotches evenly. Sew up crotch seam. The Drawstring: Turn shorts right side, (good side) out. Double thread darning needle with matching yarn. NB: Before threading yarn through waist band, make sure 3 rows down from top of waist band cast off (Bind off) edge. Thread yarn in and out through waist band (ribbing) from, and back to centre front. Cut yarn off at darning needle end. Knot each end of drawstring, (this will secure the 2 strands of yarn together to complete the drawstring). Tidy up loose yarn ends inside garment.

Copyright © 2003 11 1/2 inch fashion doll drawstring shorts - Designer:K.F.Williams

Drawstring Skirt



8 ply yarn

New Zealand/France=3.25 mm (USA=3, Canada=10) knitting needles

New Zealand/France=4.00 mm (USA=5, Canada=8) knitting needles

6sts to 7 rows = 1 square inch (2.5 square cms)

Back

Using 3.25 mm knitting needles cast on 32 stitches. First 6 rows: Work in rib, (k1,p1). Change to 4.00 mm knitting needles and work following rows in stocking stitch (stockinette stitch). Next 10 rows: Work straight. Change back to 3.25 mm knitting needles and work in rib, (k1,p1). Last 6 rows: Work straight. Cast off (bind off) in rib loosely.

Front

Work same as for Back.

Making Up

Fold garment and sew seam. This seam will be called 'back seam'. The drawstring: turn skirt right side out, and use seam to be a marker for back centre, (back seam). Double thread darning needle with matching yarn. NB: Before threading yarn through waist band, make sure 3 rows down from top of waist band cast off (bind off) edge. Thread yarn in and out through

waist band from, and back to centre front. Cut yarn off at darning needle end. Knot each end of drawstring, (as this will secure the 2 strands of yarn together to complete the drawstring). Tidy up loose yarn ends inside garment.

Copyright © 2003 11 1/2 inch fashion doll drawstring skirt - Designer:K.F.Williams

Drawstring Trousers



8 ply yarn

New Zealand/France=3.25 mm (USA=3, Canada=10) knitting needles

New Zealand/France=4.00 mm (USA=5, Canada=8) knitting needles

6sts to 7 rows = 1 square inch (2.5 square cms)

Right leg and crotch

Shaping Leg: Using 3.25 mm needles cast on 10 stitches. First 6 rows: Work in rib, (k1,p1). Work following rows in stocking stitch, (stockinette stitch): 7th row:change to 4.00 mm needles, increasing 1 stitch each end of row. (12 sts.) Next 7 rows: Work straight. 15th row:increase 1 stitch each end of row. (14 sts.) Next 7 rows: Work straight. 23rd row: Increase 1 stitch each end of row. (16 sts.) Next 3 rows: Work straight. 27th row: Increase 1 stitch only at end of row. (17 sts.) Next 3 rows: Work straight. 31st row: Increase 1 stitch each end of row. (19 sts.) Next 7 rows: Work straight. Shaping Crotch: 39th row: Cast off (bind off) 2 stitches at beginning of row. (17 sts.) 40th row: Cast off (bind off) 3 stitches at beginning of row. (14 sts.) Next 3 rows: Work straight. 44th row: Change to 3.25 mm needles, working straight in rib, (k1,p1). Next 5 rows: Continue to work straight in rib. (49 rows) Cast off (bind off) in rib.

Left leg and crotch

Shaping Leg: Using 3.25mm needles cast on 10 stitches First 6 rows: Work in rib, (k1,p1). Work following rows in stocking stitch, (stockinette stitch): 7th row: Change to 4.00 mm needles, increasing 1 stitch each end of row. (12 sts.) Next 7 rows: Work straight. 15th row: Increase 1 stitch each end of row) Next 7 rows: Work straight. 23rd row: Increase 1 stitch each end of row. (16 sts) Next 3 rows: Work Work straight. 27th row: Increase 1 stitch only at beginning of row. (17 sts) Next 3 rows: Work straight. 31st row: Increase 1 stitch each end of row. (19 sts) Next 8 rows: Work straight. Shaping Crotch: 40th row: Cast off (bind off) 2 stitches at beginning of row. (17 sts) 41st row: Cast off (bind off) 3 stitches at beginning of row. (14 sts) Next 2 rows: Work straight. 44th row: Change to 3.25 mm needles and work in rib, k1, p1. Next 5 rows: Continue to work straight in rib. (49 rows) Cast off (bind off) in rib.

Making up

1. Pin up right leg seam by easing back of leg to front of leg. Sew up right leg seam.
2. Pin up left leg seam by easing back of leg to front of leg. Sew up left leg seam.
3. Turn the Right Leg (and Crotch) in the right way, (so good side is facing) and keeping the left leg (and crotch) with wrong side facing.
4. Now place and fit the right leg into the left leg. Pin up crotch seam by matching both right and left crotches evenly. Sew up crotch seam. The Drawstring: Turn

trousers right side, (good side) out. Double thread darning needle with matching yarn. NB: Before threading yarn through waist band, make sure 3 rows down from top of waist band cast off edge, (waistband bind off edge). Thread yarn in and out through waist band (ribbing) from, and back to centre front. Cut yarn off at darning needle end. Knot each end of drawstring, as this will secure the 2 strands of yarn together to complete the drawstring.

Copyright © 2003 11 1/2 inch fashion doll drawstring trousers - Designer:K.F.Williams

Dress and Jacket



8 ply yarn

New Zealand/France=3.25 mm (USA=3, Canada=10) knitting needles

New Zealand/France=4.00 mm (USA=5, Canada=8) knitting needles

6sts to 7 rows = 1 square inch (2.5 square cms)

Back and front

(Back and front Knitted all in one piece)

With 3.25mm needles cast on 28 sts and work 2 rows in k1, p1 rib pattern. Change to 4.00 mm needles and work following rows in stst starting with k row: 3rd row: inc into 1st, 14th, 15th and 27th sts by knitting into front and then back of stitch. (32 sts) Work until work measures 4 cm finishing with a p row. Work next 6 rows in stst as follows: Row 1: k6, *k2tog; repeat from * once more, k12, **k2tog; repeat from ** once more, k last 6. (28 sts rem) Row 2: p row. Row 3: k5, *k2tog; repeat from * once more, k10, **k2tog; repeat from ** once more, k last 5. (24 sts rem) Row 4: p row. Row 5: k4, *k2tog; repeat from * once more, k8, **k2tog; repeat from ** once more, k last 4. (20 sts rem) Row 6: p row. Next 2 rows: work straight in stst. Next 4 rows work in stst as follows: Row 1: inc into 5th, 6th, 15th and 16th sts by knitting into front and then back of stitch. (24 sts) Row 2: p row. Row 3: inc into 6th, 7th, 13th and 14th sts by knitting into front and then back of stitch. (28 sts) Row 4: p row. Next 4 rows: work straight in stst. Change to 3.25 mm needles and work 2 rows in k1, p1 rib. Cast off.

Making up

Oversew back seam and tidy loose ends.

Jacket:

Back

With 3.25 mm needles cast on 12 sts and work 4 rows in k1, p1 rib. Change to 4 mm needles and work following rows in stst starting with a k row: 5th row: inc into 3rd, 6th, 9th and 11th rows. (16 sts) Next 13 rows: work straight. Cast off loosely.

Right Front

With 3.25 mm needles cast on 6 sts and work 4 rows in k1, p1 rib. Change to 4 mm needles and work following rows as follows: 5th row: k1, p1, inc into next 2 sts, k to end. (8 sts) 6th row: p to last 2 sts, k1, p1. 7th row: k1, p1, k to end. 8th row: p to last 2 sts, k1, p1. Repeat 7th and 8th rows 4 times more. 17th row: k1, p1, k to end. 18th row: cast off first 5 sts purlwise, p1, k1, p1. (3 sts rem) 19th row: k1, p1, k1. 20th row: p1, k1, p1. Cast off loosely in rib.

Left Front

(reverse shaping of right front) With 3.25 mm needles cast on 6 sts and work 4 rows in p1, k1 rib. Change to 4 mm needles and work following row as follows: 5th row: p1, k1, inc into next 2 sts purlwise, p to end. (8 sts) 6th row: k to last 2 sts, p1, k1. Repeat 7th and 8th rows 4 times more. 17th row: p1, k1, p to end. 18th row: cast off first 5 sts, k1, p1, k1. 19th row: p1, k1, p1. 20th row: k1, p1, k1. Cast off loosely in rib.

Sleeves

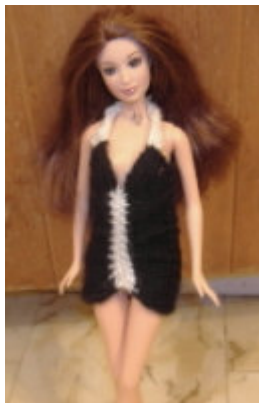
With 3.25 mm needles cast on 12 sts and work 4 rows in k1, p1 rib. Cast off loosely in rib.

Making up

Oversew back neck band seam of fronts. Match back centre and back neck band centre; oversew fronts to back from shoulder to shoulder. Matching centres; loosely oversew sleeves to armholes. Oversew side seams. Finally tidy loose ends.

Copyright © 2005 11 1/2 inch fashion doll dress and jacket - Designer: K. F. Williams.

Evening Butterfly Dress



8 ply yarn

New Zealand/France=3.25 mm (USA=3, Canada=10) knitting needles

New Zealand/France=4.00 mm (USA=5, Canada=8) knitting needles

6sts to 7 rows = 1 square inch (2.5 square cms)

Back

With NZ 3.25 mm knitting needles and MC, cast on 26 sts., work 1 row in rib: k1, p1; repeat to end. Change to NZ 4.00 mm knitting needles and work following rows in stst. starting with a knit row as follows: Next 10 rows: work straight. 12th row: Change back to NZ 3.25 mm knitting needles and work in rib: k1, p1; repeat to end. Cast off (bind off) loosely following in rib patt.

Front

Making Middle Strip: With NZ 3.25 mm knitting needles and C, cast on 3 sts. and work in rib as follows: 1st row: k1, p1, k1. 2nd row: p1, k1, p1. Repeat these 2 rows 10 times more. (22 rows) Cast off loosely (bind off) following in rib patt. Left-hand side of Middle Strip: With R.S. of work facing (k1, p1, k1 side facing), NZ 4.00 mm knitting needles and MC pick up 12 sts.

on the left-hand side of middle strip, join yarn, k1, inc. 1 knitwise ; repeat to end. (24 sts.) 2nd row: inc 6 sts. evenly across row in purl st. (30 sts.) Next 5 rows: work straight in stst. 8th row: Cast off (bind off) first 4 sts. following in rib patt., then p1, k1; repeat to last st., p1. Cast off (bind off) loosely rem 26 sts. following in rib patt. Right-hand side of Middle Strip: With W.S. of work facing (p1, k1, p1 side facing), NZ 4.00 mm knitting needles and MC pick up 12 sts. on the right-hand side of middle strip , join yarn, p1, inc. 1 purlwise; repeat to end. (24 sts.) 2nd row: inc 6 sts. evenly across row in knit st. (30 sts.) Next 5 rows: work straight in stst. 8th row: Cast off (bind off) first 4 sts. following patt. in rib, then p1, k1; repeat to last st, p1. Cast off (bind off) rem 26 sts. following in rib patt. HALTER STRAP: With NZ 3.25 mm knitting needles and C cast on 3 sts., work following rows in rib as follows: 1st row: k1, p1, k1. 2nd row: p1, k1, p1. Repeat these 2 rows 9 times more. (20 sts.) Cast off (bind off) loosely following in rib patt.

Making up

Oversew each end of halter strap to corresponding side at top of front. (see photo) Oversew side seams.

Copyright © 2005 11 1/2 inch fashion doll check v neck jersey - Designer: K.F.Williams

Evening Gown



8 ply yarn

New Zealand/France=3.25 mm (USA=3, Canada=10) knitting needles

New Zealand/France=4.00 mm (USA=5, Canada=8) knitting needles

6sts to 7 rows = 1 square inch (2.5 square cms)

Back

With NZ 3.25 mm needles cast on 22 sts and work 2 rows rib: k1, p1; repeat to end. Change to NZ 4.00 mm needles and work following rows in stst starting with a k row: Next 18 rows: work straight. 21st row: k5, k2 tog tbl; repeat to last 5 sts, k to end. (16 sts rem) 22nd row: p tightly. 23rd row: k6, p1, k1, p1, k1, p1, k5. 24th row: p5, k1, p1, k1, p1, k1, p6. 25th row: k tightly. Next 21 rows: work straight. 47th row: dec 1 st each end. 48th row: purl Repeat 47th and 48th rows twice more. (10 sts rem) Change back to NZ 3.25 mm needles and work 2 rows rib: k1, p1; repeat to end. Cast off (bind off) following rib patt.

Front

With NZ 3.25 mm needles cast on 16 sts and work 2 rows rib: k1, p1; repeat to end. Change to NZ 4.00 mm needles and work straight in stst for 58 rows starting with a k row, keeping in mind to thread different coloured yarn through each end of 54th row. - (This is for marking where to sew "the back" to "the front" for the side seams.) Next 2 rows: work straight. 61st row: k8 sts, leave rem 8 sts on holder. Turn work. Next 3 rows: work straight. 65th row: cast off (bind off) first 5 sts, k to end. (3 sts rem) 66th row: work straight. (purl row) Change back to NZ 3.25 mm needles and work following rows in rib as follows: 1st row: k1, p1, k1. 2nd row: p1, k1, p1. Repeat these 2 rows in rib twice more. Cast off (bind off) loosely following rib patt.

With wsf pick up 8 rem sts on holder, rejoin yarn and purl 1 row. Next 3 rows: work straight in stst starting with a k row. Next row: cast off (bind off) first 5 sts purlwise, p to end. (3 sts rem) Next row: work straight. (knit row) Change back to NZ 3.25 mm needles and work following rows in rib as follows: 1st row: p1, k1, p1. 2nd row: k1, p1, k1. Repeat these 2 rows in rib twice more. Cast off (bind off) loosely rib patt.

Making up

Oversew side seams matching back into front from rib at bottom to the different coloured yarn markers on front. At each front side (at underarm) pull top corner down (90 degree angle) to meet top of back rib and then oversew in place. Oversew ends of halter neck together forming a seam at back neck. Tidy up loose ends.

Copyright © 2005 11 1/2 inch fashion doll evening gown - Designer K. F. Williams

Garter Dress



8 ply yarn

New Zealand/France=3.25 mm (USA=3, Canada=10) knitting needles

New Zealand/France=4.00 mm (USA=5, Canada=8) knitting needles

6sts to 7 rows = 1 square inch (2.5 square cms)

Back

With 4.00 mm needles cast on 33 sts and work following rows in garter st as follows. 1st row: k tbl to within 2 sts of center st, k2tog tbl, k tbl center st, k2 tog tbl, k tbl to end. 2nd row: k to center st, p center st, k to end. 3rd row: k to within 2 sts of center st, k2tog, k center st, k2tog tbl, k to end. 4th row: k to center st, p center st, k to end. Rep 3rd and 4th rows until there are 11 sts rem ending with a 4th row. Next 6 rows: work straight. Next row: inc 1 st each end. Next row: work straight. Next row: inc 1 st each end. Next 8 rows work straight. Change to 3.25 mm needles and work 4 rows in rib as follows: 1st row: *k1,p1, rep from * to last st, k1. 2nd row: *p1, k1, rep from * to last st, p1. Rep 1st and 2nd rows once more. Cast off loosely following rib patt.

Right Front

With 4.00 mm needles cast on 6 sts. 1st row: *k1 tbl, rep from * to end. 2nd row: p1, k to end. 3rd row: k across row. 4th row: p1, k to end. Repeat 3rd and 4th rows 17 times more. (38 rows worked) Change to 3.25 mm needles and work rows in rib as follows. Next 4 rows: *p1, k1, rep from * to end. Cast off loosely following rib patt.

Left Front

With 4.00 mm needles cast on 6 sts. 1st row: *k1 tbl, rep from * to end. 2nd row: k to last st, p1. 3rd row: k across row. 4th row: k to last st, p1. Rep 3rd and 4th rows 17 times more. (38 rows worked) Change to 3.25 mm needles and work rows in rib as follows. Next 4 rows: *k1,

p1, rep from * to end. Cast off loosely following rib patt.

Sleeves

With 3.25 mm needles cast on 10 sts and work 4 rows in k1, p1 rib. Change to 4.00 mm needles and work following rows in garter st. 5th row: inc 1 st each end. 6th row: work straight. 7th row: inc 1 st each end. Next 15 rows: work straight. Cast off loosely.

Making up

Oversew shoulder fronts to back shoulders. Match top sleeve center in line with shoulder seam-line edge with a pin. Pin rest of top of sleeve to side edge and oversew. Oversew side seams to end of sleeves. Tidy loose ends. Put dress on doll (at this stage it looks like a jacket), cut 2 strands of quite long matching yarn and knot together at each end. Starting from the doll's cleavage, using knots to help you to guide and thread yarn through gaps at both sides of front - lace yarn (like you would with shoe laces), all the way down to past doll's crotch and then tie a bow. (see front view pic)

Copyright © 2006 11 1/2 inch fashion doll garter dress - Designer:K.F.Williams.

Halter Neck Dress



8 ply yarn

New Zealand/France=3.25 mm (USA=3, Canada=10) knitting needles

New Zealand/France=4.00 mm (USA=5, Canada=8) knitting needles

6sts to 7 rows = 1 square inch (2.5 square cms)

Back

Cast on 16 sts using 3.25 mm knitting needles. First 2 rows: rib: k1, p1; repeat to end. Change to 4.00 mm knitting needles and work following rows in stst: Next 9 rows: work straight. Dec 1 st each end of every 2nd row until 10 sts rem. Next 3 rows: work straight. Change back to 3.25 mm knitting needles and work last 2 rows in rib: k1, p1; repeat to end. Cast off (bind off).

Front

Cast on 16 sts using 3.25 mm knitting. Next 2 rows: rib: k1, p1; repeat to end. Change to 4.00 mm knitting needles and work following rows in stst: Next 9 rows: work straight. Dec 1 st each end of every 2nd row until 10 sts rem. (17 rows worked). Next 5 rows: work straight. 23rd row: increase 6 sts evenly across row. 24th row: purl row. Dividing for halter neck: 25th row: Change back to 3.25 mm knitting needles and work in rib (k1, p1) for the first 8 sts and turn work. (leave rem 8 sts on holder) ** Next 5 rows: k1, p1; repeat to end. 29th row. k2 to, p2 tog; repeat to end. Next 11 rows: work in rib: k1, p1; repeat to end. Cast off (bind off) loosely in rib. ** Rejoin yarn to rem 8 sts left on holder and work 1 row in rib (k1, p1) using 3.25 mm knitting needles. Follow instructions from ** to **.

Making Up

Oversew back and front together at sides. Sew domes (fasteners) or valcro to back of halter neck.

Copyright © 2005 11 1/2 inch fashion doll halter neck dress - Designer:K.F.Williams.

Halter Neck Swimsuit



8 ply yarn

New Zealand/France=3.25 mm (USA=3, Canada=10) knitting needles

New Zealand/France=4.00 mm (USA=5, Canada=8) knitting needles

6sts to 7 rows = 1 square inch (2.5 square cms)

Back

Using 4.00 mm knitting needles cast on 4 sts and work following rows in stst starting with a knit row. First 6 rows: inc 1 st each end of row. (16 sts) 7th row: dec 1 st each end of row. 8th row: work straight. Repeat 7th and 8th rows twice more. Next 2 rows: work straight. 15th row: Change to 3.25 mm knitting needles and work in rib: k1, p1; repeat to end. Next 2 rows: work straight in rib. Cast off (bind off).

Front

Using 4.00 mm knitting needles cast on 4 sts and work following rows in stst starting with a knit row: First 6 rows: inc 1 st each end of row. (16 sts) 7th row: dec 1 st each end of row. 8th row: work straight. Repeat 7th and 8th rows twice more. (10 sts rem) Next 8 rows: work straight. 21st row: inc 6 sts evenly across row. 22nd row: work straight. 23rd row: change to 3.25 mm knitting needles and work in rib (k1, p1) for the first 8 sts and turn work, leaving 8 rem sts on holder. ** Next 5 rows: work in rib: k1, p1; repeat to end. 29th row: k2 tog, p2 tog; repeat to end of row. (4 sts rem) Next 11 rows: work in rib: k1, p1; repeat to end. Cast off (bind off) in rib. Rejoin yarn to rem 8 sts left on holder and work 1 row in rib (k1,p1) using 3.25 mm knitting needles. Then follow instructions from ** to **.

Making Up

Oversew crotch together, back and front sides together and then sew domes (or valcro) to back of halter neck.

Copyright © 2005 11 1/2 inch fashion doll halter neck swimsuit - Designer:K.F.Williams.

Hipster Flares



8 ply yarn

New Zealand/France=3.25 mm (USA=3, Canada=10) knitting needles

New Zealand/France=4.00 mm (USA=5, Canada=8) knitting needles

6sts to 7 rows = 1 square inch (2.5 square cms)

Shirring elastic or any "not-so-wide" elastic

Tension: 6 sts to 1 inch (2.5cm)

Right Side

Shaping leg: With NZ 3.25 mm needles cast on 25 sts and work 2 rows rib as follows: 1st row: k1, p1; repeat to last st, k1. 2nd row: p1, k1; repeat to last st, p1. Change to NZ 4.00 mm needles and work following rows in stst starting with a k row: Next 4 rows: work straight. 7th row: cast off (bind off) 1 st beg row, k next 8 sts k2 tog tbl, k to end. (23 sts rem) 8th row: cast off (bind off) 1 st beg row purlwise, p next 8 sts, p 2 tog, p to end. (21 sts rem) Next 4 rows: work straight. 13th row: cast off (bind off) 1 st beg row, k next 7 sts, k 2 tog tbl, k to end. (19 sts rem) 14th row: cast off (bind off) 1 st beg row purlwise, p next 7 sts, p 2 tog, p to end. (17 sts rem) Next 4 rows: work straight. 19th row: cast off (bind off) 1 st beg row, k next 6 sts, k 2 tog tbl, k to end. (15 sts rem) 20th row: cast off 1 st beg row purlwise, p next 6 sts, p 2 tog, p to end. (13 sts) Next 6 rows: work straight. 27th row: inc 1 st each end. (15 sts) Next 5 rows: work straight. 33rd row: k 7 sts, inc into next st, k to last st, inc into last st. (17 sts) Next 5 rows: work straight. 39th row: k 8 sts, inc into next st, k to last st, inc into last st. (19 sts) Next 3 rows: work straight. Shaping front crotch: 43rd row: cast off (bind off) 2 sts beg row, k to end. (17 sts rem) Shaping back crotch: 44th row: cast off (bind off) 3 sts beg row purlwise, p to end. (14 sts rem) 45th row: k 7 sts, inc into next st, k to end. (15 sts) Next 3 rows: work straight. Change back to NZ 3.25 mm needles and work 2 rows rib as follows: 1st row: k1, p1; repeat to last st, k1. 2nd row: p1, k1; repeat to last st, p1. Cast off (bind off) loosely following rib patt.

Left Side

Shaping leg: With NZ 3.25 mm needles cast on 25 sts and work 2 rows rib as follows: 1st row: p1, k1; repeat to last st, p1. 2nd row: k1, p1; repeat to last st, k1. Change to NZ 4.00 mm needles and work following rows in stst starting with a p row: Next 4 rows: work straight. 7th row: cast off (bind off) 1 st beg row purlwise, p next 8 sts, p 2 tog, p to end. (23 sts rem) 8th row: cast off (bind off) 1 st beg row, k next 8 sts, k 2 tog tbl, k to end. (21 sts rem) Next 4 rows: work straight. 13th row: cast off (bind off) 1 st beg row purlwise, p next 7 sts, p 2 tog, p to end. (19 sts rem) 14th row: cast off (bind off) 1 st beg row, k next 7 sts, k 2 tog tbl, k to end. (17 sts rem) Next 4 rows: work straight. 19th row: cast off (bind off) 1 st beg row purlwise, p next 6 sts, p 2 tog, p to end. (15 sts rem) 20th row: cast off (bind off) 1 st beg row, k next 6 sts, k 2 tog tbl, k to end. (13 sts rem) Next 6 rows: work straight. 27th row: inc 1 st purlwise each end. (15 sts) Next 5 rows: work straight. 33rd row: p 7 sts, inc into next st purlwise, p to last st, inc into last st purlwise. (17 sts) Next 5 rows: work straight. 39th row: p 8 sts, inc into next st purlwise, p to last st, inc into last st purlwise. (19 sts) Next 3 rows: work straight. Shaping front crotch: 43rd row: cast off (bind off) 2 sts beg row purlwise, p to end. (17 sts rem) Shaping back crotch: 44th row: cast off (bind off) 3 sts beg row, k to end. (14 sts) 45th row: p 7 sts, inc into next st purlwise, p to end. (15 sts) Next 3 rows: work straight. Change back to NZ 3.25 mm needles and work 2 rows rib as follows: 1st row: p1, k1; repeat to last st, p1. 2nd

row: k1, p1; repeat to last st, k1. Cast off (bind off) loosely following rib patt.

Making Up

Legs: Oversew right leg seam. Oversew left leg seam. Crotch: Turn the right leg the right way and keep the left leg inside out. Now place the right leg inside the left leg. Match up "both sides" of crotch evenly. Oversew crotch seam. With whole garment inside out, thread shirring elastic in and out through top rib at hips (starting at back and ending at back) and tie elastic at ends. (NB: Shirring elastic threads through darning needle just like yarn.) Secure and tidy loose yarn ends.

Copyright © 2005 11 1/2 inch fashion doll hipster flares - Designer:K.F.Williams.

Hipster one tiered skirt



8 ply yarn

New Zealand/France=3.25 mm (USA=3, Canada=10) knitting needles

New Zealand/France=4.00 mm (USA=5, Canada=8) knitting needles

6sts to 7 rows = 1 square inch (2.5 square cms)

Back

With 3.25 mm needles cast on 32 sts and work 2 rows in k1, p1 rib. Change to 4.00 mm needles and work following rows in stst starting with a k row. Next 4 rows: work straight. 7th row: *k2 tog, rep from * to end. (16 sts rem) Next 11 rows: work straight. Change to 3.25 mm needles and work following rows in rib as follows. Next row: k2 tog, *p1, k1, rep from * to last 2 sts, p2 tog. Next 5 rows: *k1, p1, rep from * to end Cast off in k1,p1 rib.

Front

Same as for back.

Making up

Oversew side seams and tidy loose ends.

Copyright © 2006 11 1/2 inch fashion doll hipster one tiered skirt - Designer: K. F. Williams.

Plain V Neck Jersey



8 ply yarn

New Zealand/France=3.25 mm (USA=3, Canada=10) knitting needles

New Zealand/France=4.00 mm (USA=5, Canada=8) knitting needles

6sts to 7 rows = 1 square inch (2.5 square cms)

Back

With 3.25 mm needles cast on 15 sts. Work first 4 rows in rib as follows: 1st row: k1, p1, repeat to last st, k1. 2nd row: p1, k1, repeat to last st, p1. Repeat 1st and 2nd rows once more. Change to 4.00 mm needles and work following rows in stocking stitch (stockinette) starting with a knit row: 5th row: inc. 1 st each end of row. Next 17 rows: work straight. 23rd row: cast off (bind off) 2 sts beg. row. 24th row: same as for 23rd row. Next 4 rows: work straight. 29th row: cast off (bind off) 3 sts. beg. row. 30th row: same as for 29th row. Change to 3.25 mm needles and work 2 rows in k1, p1 rib. Cast off (bind off) loosely.

Front

With 3.25 mm needles cast on 15 sts. Work first 4 rows in rib as follows: 1st row: k1, p1, repeat to last st, k1. 2nd row: p1, k1, repeat to last st, p1. Repeat 1st and 2nd rows once more. Change to 4.00 mm needles and work following rows in stocking stitch (stockinette) starting with a knit row: 5th row: inc. 1 st each end of row. Next 9 rows: work straight. Dividing for neck and shaping armholes: 15th row: k 8 sts, leave rem. sts. on holder. Turn work. Front Left Side: ** 16th row: cast off (bind off) 1 st beg row. 17th row: work straight. 18th row: cast off (bind off) 1 st beg row. 19th row: work straight. 20th row: cast off (bind off) 1 st beg row. Next 2 rows: work straight. 23rd row: cast off (bind off) 2 sts beg row. Next 5 rows: work straight. Cast off (bind off) loosely. ** Front Right Side: With w.s.f (wrong side facing) rejoin yarn to sts left on holder, p 8 sts, leave 1 st still on holder - this will be front centre stitch. Work as for front left side from ** to **.

Front neck band

With r.s.f (right side facing) using 3.25 mm needles pick up 9 sts down front neck, pick up front centre st from holder, pick up 9 sts up other side of front neck. Rejoin yarn. 1st row: inc into each of first 9 sts, k. centre st, inc into each of last 9 sts. (37 sts.) 2nd row: work p1, k1 rib to last 2 sts before centre st, p. 2 tog, p. centre st, p. 2 tog., begin with p1 rib to end. 3rd row: work in rib k1, p1 rib to with in 2 sts of centre st ending with p1, k next 2 sts tog tbl, k centre st, k next 2 sts tog, begin with p1 rib to end. Cast off (bind off) as follows: p1, k1 rib to last 2 sts before centre stitch, p2 tog, cast off (bind off) next st, p centre st, cast off (bind off) next st, p2 tog, cast off (bind off) next st, cast off (bind off) following sts in k1, p1 rib.

Sleeves

With 3.25 mm needles cast on 8 sts. Work first 4 rows in k1, p1 rib. Change to 4.00 mm needles and work following rows in stocking stitch (stockinette) starting with a knit row: 5th row: inc. 1 st each end of row. Next 13 rows: work straight. 19th row: inc 1 st each end of row. Mark each end of 19th row with different coloured yarn to denote end of sleeve seam. 20th row: work straight. Cast off loosely.

Making up

Sew neck band and shoulder seams. Sew cast-off edge (bind-off edge) of sleeves to straight row-ends of armholes, setting row - ends above markers on sleeves to sts cast off (to sts bind off) at underarms. Join side and sleeve seams. Tidy loose ends.

Copyright © 2005 11 1/2 inch fashion doll plain v neck jersey - Designer: K.F.Williams.

Poncho



8 ply yarn

New Zealand/France=3.25 mm (USA=3, Canada=10) knitting needles

New Zealand/France=4.00 mm (USA=5, Canada=8) knitting needles

6sts to 7 rows = 1 square inch (2.5 square cms)

Back

With 4.00 mm needles cast on 49 sts and work following rows in garter stitch as follows: 1st row: k tbl to within 2 sts of center st, k2tog tbl, k tbl center st, k2tog tbl, k tbl to end. 2nd row: k to center st, p center st, k to end. 3rd row: k to within 2 sts of center st, k2tog, k center st, k2tog tbl, k to end. 4th row: k to center st, p center st, k to end. Repeat 3rd and 4th rows until there are 13 sts rem ending with a 4th row. Cast off loosely following pattern of 3rd row.

Front

Same as for Back.

Making up

Oversew sides and tidy loose ends.

Copyright © 2006 11 1/2 inch fashion doll poncho - Designer: K.F.Williams.

Square Neck Top



8 ply yarn

New Zealand/France=3.25 mm (USA=3, Canada=10) knitting needles

New Zealand/France=4.00 mm (USA=5, Canada=8) knitting needles

6sts to 7 rows = 1 square inch (2.5 square cms)

Back

Using NZ 3.25 mm knitting needles (or equivalent size) cast on 14 sts and work all rows in rib as follows: First 2 rows: work straight in rib: k1, p1; repeat to end of row. 3rd row: inc 1 st each end of row keeping with rib pattern; (Do this by inc into first st knitwise, p1, k1; repeat to last st, inc into last st purl wise. - (16 sts) 4th row: p1, k1; repeat to end. 5th row: inc 1 st each end of row keeping with rib pattern; (Do this by inc into first st purl wise, k1, p1; repeat to last st, inc into last st knit wise.) - (18 sts) 6th row: rib: k1, p1; repeat to end. 7th row: inc 1 st each end of row keeping with rib pattern; (Do this by inc into first st knit-wise, p1, k1; repeat to last st purl-wise.) - (20 sts) 8th row: p1, k1; repeat to end of row. 9th row: inc 1 st each end of row keeping with rib pattern; (Do this by inc into first st purl-wise, k1, p1; repeat to last st, inc into last st knit-wise.) - (22 sts) 10th row: k1, p1; repeat to end of row. 11th row: k1, p1; repeat to end of row. 12th row: k1, p1; repeat to end of row. 13th row: Cast off (bind off) 1 st beg of row keeping with rib pattern; (Do this by k1, p1, passing knit st over purl st purl-wise, k1, repeat to end of row.) - (21 sts) 14th row: Cast off (bind off) 1 st beg of row keeping with rib pattern; (Do this by k1, p1, passing knit st over purl st purl-wise, k1, p1; repeat to last st, k1.) - (20 sts) 15th row: p1, k1, pass purl st over knit st knit-wise, p1, k1; repeat to last 14 sts; cast off (bind off) next 8 sts rib wise, k1, p1, k1, k1, pass last purl st over last knit st knit-wise. 16th row: k1, p1; repeat to last st, k1. Place rem 5 sts on holder and turn work. 17th row: dec 1 st at end of row keeping with rib pattern; (Do this by p1, k1; repeat once more, p1, pass k st over purl st purl-wise.) - (4 sts rem) 18th row: p1, k1; repeat to end of row. 19th row: p1, k1; repeat to end of row and then pass purl st over knit st knit-wise. (3 sts rem) 20th row: k1, p1, k1. Cast off (bind off) last 3 sts rib-wise. Rejoin yarn to 5 rem sts on holder at centre edge and p1, k1; repeat to last st, p1. (16th row) 17th row: dec 1 st beg of row. (Do this by k1, p1, pass knit st over purl st purl-wise, k1, p1, k1.) - (4sts rem) 18th row: p1, k1; repeat to end of row. 19th row: dec 1 st beg of row; (Do this by p1, k1, pass purl st over knit st knit-wise, p1, k1.) - (3 sts rem) 20th row: p1, k1, p1. Cast off (bind off) last 3 sts rib-wise.

Front

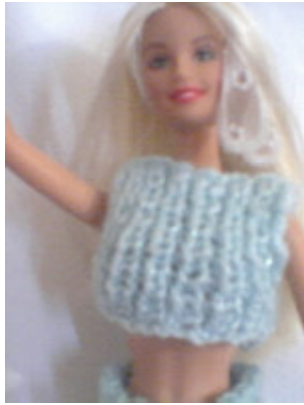
Same as for back.

Making Up

Over sew shoulder seams. Over sew side seams.

Copyright © 2005 11 1/2 inch fashion doll square neck rib top - Designer: K. F. Williams.

Top



8 ply yarn

New Zealand/France=3.25 mm (USA=3, Canada=10) knitting needles

New Zealand/France=4.00 mm (USA=5, Canada=8) knitting needles

6sts to 7 rows = 1 square inch (2.5 square cms)

Back

Cast on 15 stitches with 3.25 mm needles and work following rows in rib: 1st row: knit 1, purl 1, repeat to last stitch, knit 1. 2nd row: purl 1, knit 1, repeat to last stitch, purl 1. Repeat 1st and 2nd rows 6 more times. (14 rows) Cast off (bind off) in rib.

Front

Same as for back.

Making up

Sew shoulder seams, by sewing up 4 stitches in from side edges. This will leave enough space for the boat neckline. Sew side seams, by sewing 6 rows up from the bottom. This will leave enough space for the armholes. Tidy up loose yarn ends inside garment.

Copyright © 11 1/2 inch 2003 fashion doll top - Designer: K.F.Williams.

White Dress



8 ply yarn

New Zealand/France=3.25 mm (USA=3, Canada=10) knitting needles

New Zealand/France=4.00 mm (USA=5, Canada=8) knitting needles

6sts to 7 rows = 1 square inch (2.5 square cms)

Back

Cast on 32 sts using NZ 3.25 mm knitting needles and rib 2 rows; (k1, p1; repeat to end).
Shaping Flare: 3rd row: Change to NZ 4.00 mm knitting needles; k2 tog, k9, k2 tog, k8, k2 tog, k to end. 4th row: p2 tog, p8, p2 tog, p7, p2 tog, p to end. 5th row: k2 tog, k7, k2 tog, k6, k2 tog, k to end. 6th row: p2 tog, p6, p2 tog, p5, p2 tog, p to end. 7th row: k2 tog, k5, k2 tog, k4, k2 tog, k to end. 8th row: p2 tog, p4, k2 tog, p3, p2 tog, p3, p2 tog, p to end. 9th row: inc 1 st each end of row. (16 sts rem) 10th row: purl row. Next 22 rows: work straight. Shaping hips: 33rd row: dec 1 st each end of row. 34th row: work straight. Repeat 33rd and 34th rows twice more. (10 sts rem) Shaping waist: Next 6 rows: work straight. Shaping bodice: 45th row: inc 5 sts evenly across row. (15 sts) 46th row: change to 3.25 mm knitting needles and workp1, k1; repeat to end. 47th row: work k1, p1; repeat to end. Repeat 46th and 47th rows 5 times more. NB: making sure at 52nd row to mark first and last sts with different coloured yarn. (= yarn markers) - this is for making a gap for armholes. 58th row: p1, k1; repeat to end. Cast off loosely in rib.

Front

Same as for back.

Making up

Shoulder seams: Oversew 4 sts in from side edge to outside side edge. Side seams: Over sew side seams from bottom rib up to different coloured yarn markers. Tidy up loose yarn ends inside of garment.

Copyright © 2005 11 1/2 inch fashion doll white dress - Designer:K.F.Williams.

White Jacket



8 ply yarn

New Zealand/France=3.25 mm (USA=3, Canada=10) knitting needles

New Zealand/France=4.00 mm (USA=5, Canada=8) knitting needles

6sts to 7 rows = 1 square inch (2.5 square cms)

Back

Using NZ 3.25 mm knitting needles (or equivalent size) cast on 18 sts and work 4 rows rib (k1, p1; repeat to end). Change to NZ 4.00 mm knitting needles (or equivalent size) and work following rows in stst starting with a knit row: Next 25 rows: work straight. 30th row: work straight. Mark first and last stitches of row with different coloured yarn (= yarn marker) Next 6 rows: work straight. 37th row: Cast off / bind off 6 sts loosely beg of row knitwise. 38th row: Cast off / bind off 6 sts loosely beg of row purlwise. Cast off / bind off loosely rem 6 sts.

Left front

Using NZ 3.35 mm knitting needles (or equivalent size) cast on 10 sts and work 4 rows rib (k1,

p1; repeat to end). Change to NZ 4.00 mm knitting needles (or equivalent size) and work following rows as follows: 5th row: knit to last 4 sts and work in rib: k1, p1; repeat to end. 6th row: Rib (k1, p1) first 4 sts and then purl to end. Repeat 5th and 6th rows 10 times more. 27th row: work as for 5th row. 28th row: work as for 6th row. Mark last stitch of row with different coloured yarn, (= yarn marker). Continue on repeating 5th and 6th rows for another 4 times. (36 rows) 37th row: Work as for 5th row. 38th row: Cast off / bind off 6 sts beg of row purlwise and then work p1, k1, p1 (4 sts rem). Last 2 rows: work straight in rib: k1, p1; repeat to end.

Right front

(Reversed shaping of Left Front) Using NZ 3.25 mm knitting needles (or equivalent size) cast on 10 sts and work 4 rows rib (k1, p1; repeat to end). Change to NZ 4.00 mm knitting needles (or equivalent size) and work following rows as follows: 5th row: work in purl to last 4 sts and then rib k1, p1; repeat to end. 6th row: work first 4 sts in rib (k1, p1) and then knit to end. Repeat 5th and 6th rows 10 times more. 27th row: work as for 5th row. 28th row: work as for 6th row. Mark last stitch worked of row with different coloured yarn (= yarn marker). Continue on repeating 5th and 6th rows for another 4 times. 37th row: Work as for 5th row. 38th row: Cast off / bind off 6 sts beg of row knitwise and then work p1, k1, p1 (4 sts rem). Last 2 rows: work straight in rib: k1, p1; repeat to end. Cast off / bind off loosely in rib.

Sleeves

Using NZ 3.25 mm knitting needles (or equivalent size) cast on 12 sts and work 4 rows rib: k1, p1; repeat to end. Change to NZ 4.00 mm knitting needles (or equivalent size) and work following rows in stst starting with a knit row: 5th row: inc 1 st each end of row. Next 5 rows: work straight. 11th row: inc 1 st each end of row. Next 5 rows: work straight. Cast off / bind off loosely. Find top sleeve centre and mark with different coloured yarn (= yarn marker).

Belt

Using 3.25 mm knitting needles (or equivalent size) cast on 3 sts and work in rib as follows: 1st row: k1, p1, k1 2nd row: p1, k1, p1 Repeat 1st and 2nd rows until 32 rows have been worked. Cast off / bind off ribwise.

Making up

Oversew fronts to back at shoulders. Oversew back neck ribbing centres together and then oversew back neck ribbing to back neck. Line up top sleeve centre with shoulder seam line using a sewing pin to hold in place. Then pin rest of top sleeve into place between the yarn markers (made previously with different coloured yarn) at arm edge. Pull out yarn markers. Oversew top sleeve to arm edge. Do same for other sleeve. Oversew sides: from bottom ribbing up to sleeve ribbing. Finally tidy up loose yarn ends (inside of garment).

Copyright © 2005 11 1/2 inch fashion doll white jacket - Designer: K. F. Williams.

These free knitting patterns may not be used for commercial financial gain.
However these free patterns can be used to sell as made up items/garments (not the written patterns themselves) by charitable organisations to raise funds and by individuals who would like to raise a few funds for themselves at market days or at their own private garage sales.

Printouts of my free patterns may be distributed freely, as long as myself as author remains intact and as long as as my free patterns are not distributed with the purpose of commercial gain.
All other products mentioned are registered trademarks or trademarks of their respective companies.

Copyright © 2005-2010 Kathleen F. Williams of Kiwi Fashion Doll Patterns.

